

# AC500

## Calorimeter

ASTM/DIN-compliant, the robust AC500 from LECO quickly determines gross calorific content.

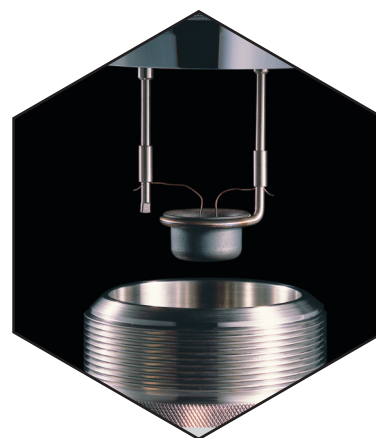


### Unique Design

The AC500 Isoperibol Calorimeter features an integral water-measuring and combustion vessel-filling station simplifying sample preparation. This stand-alone benchtop unit has a fully integrated circulation system, making it compact as well as simple to operate. No additional heaters or coolers are required. The operating system uses an electronic thermometer with an accuracy of 0.0001 °C to measure the temperature every six seconds. The AC500 also features the unique ability to constantly monitor temperature in both the outer jacket and the calorimeter proper, making two-channel correction possible.

### A High Level of Performance

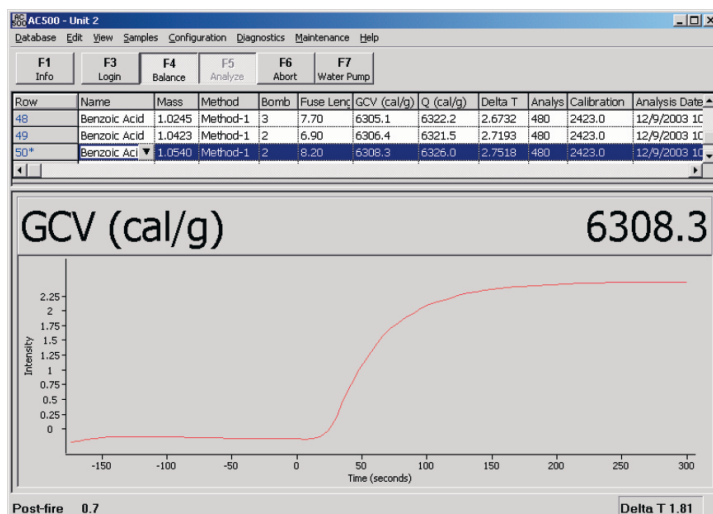
The AC500 achieves high precision across a wide range of sample sizes and ambient conditions. Results may be obtained using a choice of three modes: the traditional Regnault-Pfaundler = 20 minutes, Precision = 8 minutes, or Predictive = 4.5 to 7.5 minutes.



Combustion vessel design makes pre-/post-handling of samples trouble-free.



Optional thread-ignition combustion vessel provides a seamless analysis without fuse wire connections.



LECO's AC500 software seamlessly manages data, report generation, LIMS compatibility, and can control up to four separate calorimeters through a single PC.

**LECO**  
EMPOWERING RESULTS