

**OLYMPUS**<sup>®</sup>

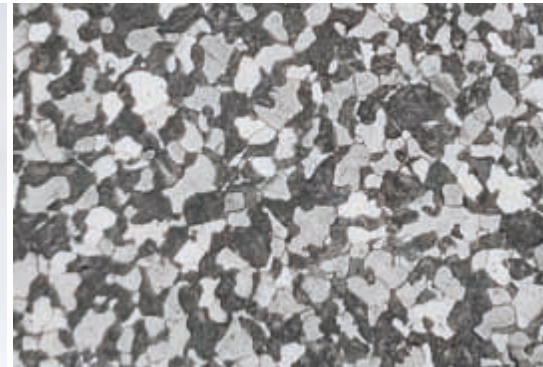
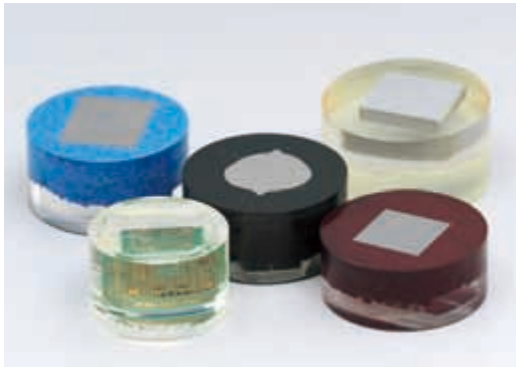
Your Vision, Our Future

Inverted Metallurgical Microscope

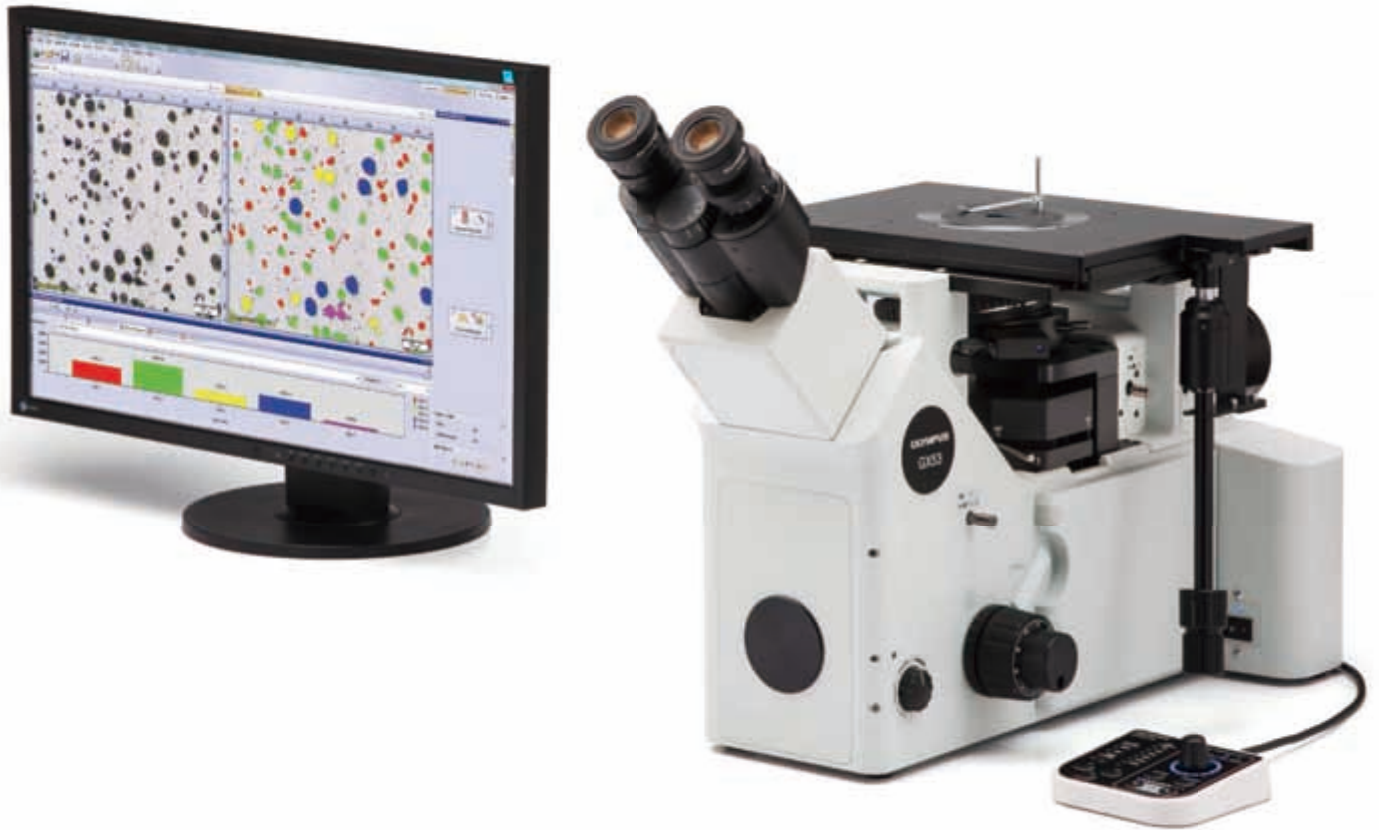
**GX53**

# Advanced Microscopy Solutions for Metallurgy Inspection

**NEW**



# Quick analysis for large or thick sample materials



The GX53 inverted microscope is used for a wide range of applications often seen in the steel, automotive, electronics, and other manufacturing industries. The microscope enables users to inspect polished metals and cross-section samples simply by placing them upside down on the stage. The sample does not need to be leveled and can be thick, large, or heavy.

The GX53 delivers crisp images that can be difficult to capture using conventional microscopy observation methods.

When combined with Pax-it™ 2 image analysis software, the microscope streamlines the inspection process from observation to image analysis and reporting.

## Streamline Your Inspection Process

### Fast Inspections, Advanced Functionality

---

Quickly observe, measure, and analyze metallurgical structures.

### User-Friendly

---

Even novice operators can comfortably make observations, analyze results, and create reports.

### Advanced Imaging Technology

---

Our proven optics and imaging technology deliver clear images and reliable results.

### Modular

---

Choose the components you need for your application.

# Fast Inspections, Advanced Functionality

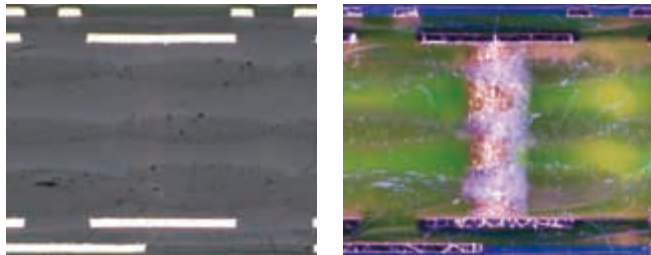
## Advanced Analysis Tools

The GX53 microscope's various observation capabilities provide clear, sharp images, so users can reliably detect defects in their samples.

### The Invisible Becomes Visible: MIX Technology

MIX technology produces unique observation images by combining darkfield with another observation method, such as brightfield or polarization. MIX observation enables users to view samples that are difficult to see with conventional microscopes, and represents even small height differences of sample surfaces. The circular LED illuminator used for darkfield observation has a directional darkfield function where one or more quadrants are illuminated at a given time. This reduces a sample's halation and is useful for visualizing its surface texture.

#### Cross-section of a printed circuit board



Brightfield

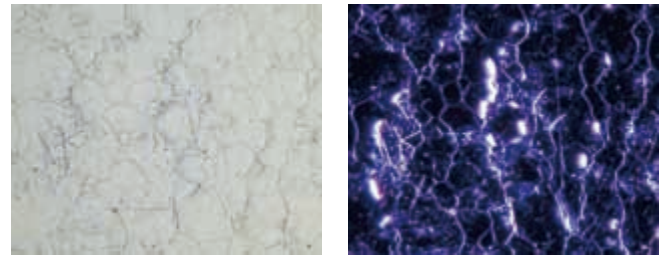
The substrate layers and through hole are invisible.



Darkfield

The traces are invisible.

#### Stainless steel



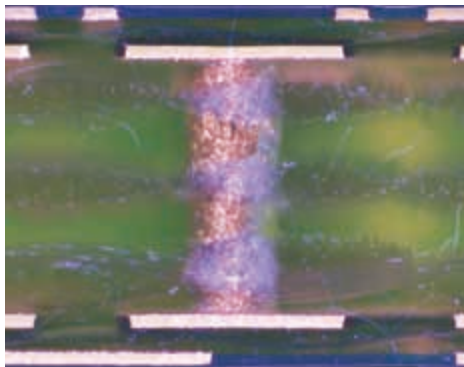
Brightfield

The texture is unobservable.



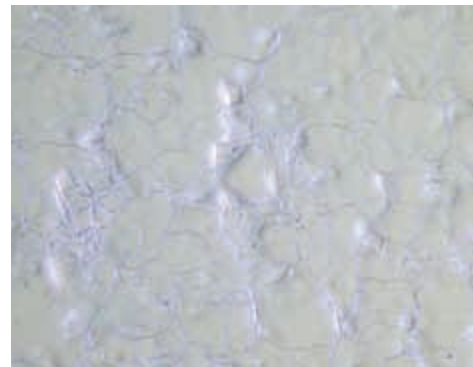
Quadrant illumination of darkfield

The color information is eliminated.



MIX: Brightfield + Darkfield

All the components are clearly represented.



MIX: Brightfield +  
Quadrant illumination of darkfield

Both the material color and texture are visible.



# User-Friendly

## A Design That Emphasizes User Comfort

The microscope's ergonomic design helps users stay comfortable while they work, contributing to a more efficient inspection. When used with OLYMPUS Stream software, operators can easily acquire images of diverse samples, conduct a variety of analyses, and generate professional reports.

### ■ Maintain a comfortable posture

The tilting observation tube's extensive range and adjustable eyepoint enable operators to sit or stand at the microscope in a comfortable posture.



### ■ Observe large, heavy samples

Samples up to 5 kg can be inspected simply by placing the polished surface on the stage.

### ■ Helps prevent objective collisions

The stage mirror helps make it easier to adjust the observation point and objective magnification. It also helps prevent the objective from colliding with the sample.



### ■ Easily switch observation methods

The microscope supports brightfield, darkfield, differential interference contrast (DIC), and simple polarized light observations. Use a dedicated level to quickly switch between brightfield and darkfield. Add DIC simply by adding a slider.



### ■ Convenient hand switch

Control MIX illumination, the objectives, and OLYMPUS Stream functions using the available hand switch.



### ■ Easily control the stage during observation

Use the dedicated handle to control the stage while you are looking through the eyepieces.



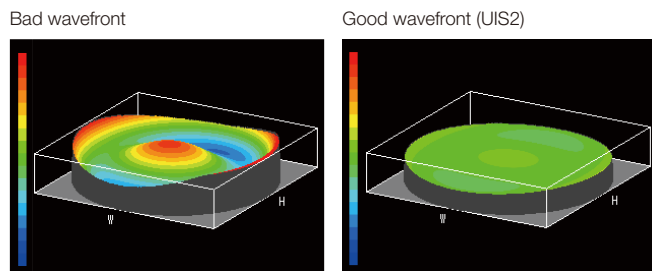
# Advanced Imaging Technology

Proven optics and digital imaging technology deliver quality inspection data

Olympus' history of developing high-quality optics and advanced imaging capabilities has led to quality microscopes that offer exceptional measurement accuracy.

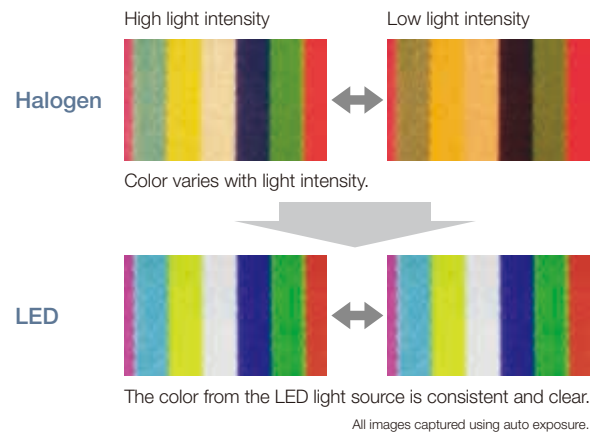
## Reliable Optical Performance: Wavefront Aberration Control

The optical performance of objective lenses directly impacts the quality of the observation images and analysis results. Olympus UIS2 high-magnification objectives are designed to minimize wavefront aberrations, delivering reliable optical performance.



## Consistent Color Temperature: High-Intensity White LED Illumination

The GX53 microscope utilizes a high-intensity white LED light source for reflected and transmitted illumination. The LED maintains a consistent color temperature regardless of intensity for reliable image quality and color reproduction. The LED system provides efficient, long-life illumination that is ideal for materials science applications.



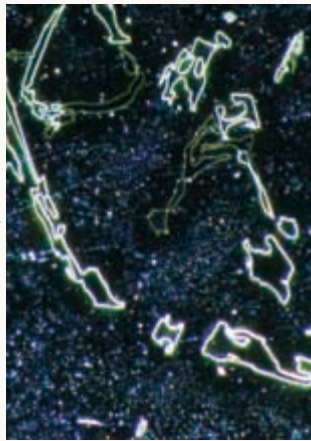
## Applications

Reflected light microscopy spans a range of applications and industries. Below are just a few examples of what can be achieved using different observation methods.

### Polished sample of AISi



Brightfield

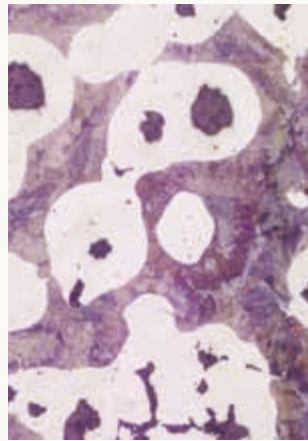


Darkfield

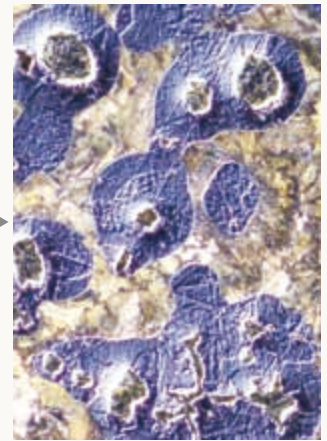
Brightfield is a common observation method to observe reflected light from a sample by illuminating it straight on.

Darkfield is used to observe scattered or diffracted light from a sample, so imperfections clearly stand out. Inspectors can identify even minute scratches or flaws.

### Spheroidal graphite cast iron



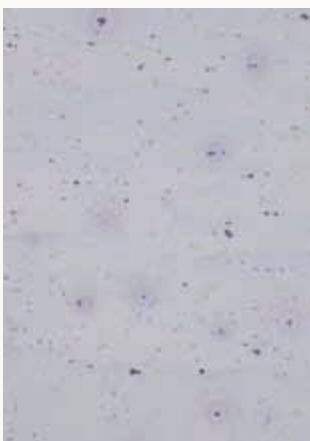
Brightfield



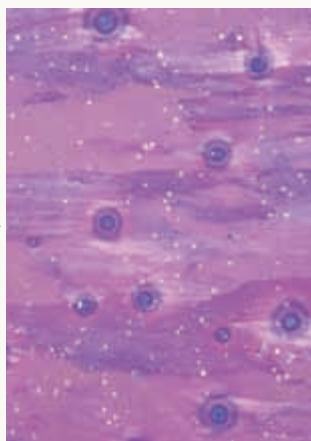
DIC observation

Differential interference contrast (DIC) is an observation technique where the height of a sample, normally not detectable in brightfield, is visible as a relief, similar to a 3D image with improved contrast. It is ideal for inspections of samples that have very minute height differences, including metallurgical structures and minerals.

### Aluminum alloy



Brightfield



Polarized light observation

Polarized light observation represents a material's texture and crystal condition brightly. It is suitable for metallurgical structures such as the growth pattern of graphite on nodular cast iron and minerals.

### Electronic device



Brightfield



MIX observation: Brightfield + Darkfield

MIX observation combines brightfield and darkfield illumination methods, showing both the sample's color and structure.

The above MIX observation image clearly reproduces the device's color and texture as well as the condition of the adhesive layer.

# Customizable

## Choose the Components You Need

The GX53 microscope is designed to enable users to choose a variety of optical components to suit individual inspection and application requirements. The system can utilize all available observation methods. Users can also select from a variety of OLYMPUS Stream image analysis packages to meet image acquisition and analysis needs.

### GX53 Reflected/Transmitted Light Combination

The GX53 microscope frame can be configured for both reflected and transmitted light with manual, coded, or motorized components.

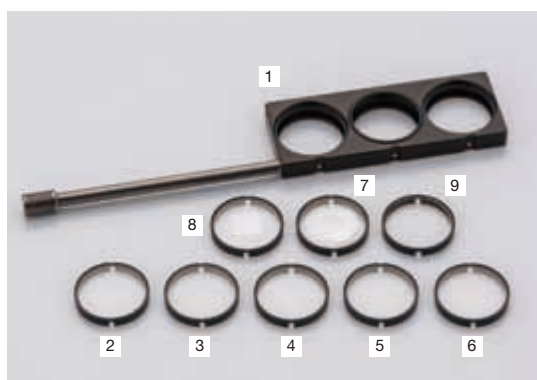
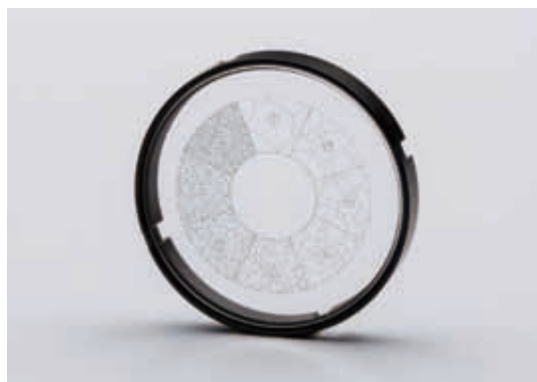


### Scales for Metallurgical Analysis

Glass scales can be inserted into the eyepiece to conduct observations that comply with industry standards. Grain size reticles, squared circles, and calibration scales are also available for each objective.

#### Scale slider

1	GX-SLM	Scale slider, attachable 3 glass scales maximum
2	GX51-SLMG5	Scale glass for 5× objective, scale length: 200 μm
3	GX51-SLMG10	Scale glass for 10× objective, scale length: 100 μm
4	GX51-SLMG20	Scale glass for 20× objective, scale length: 50 μm
5	GX51-SLMG50	Scale glass for 50× objective, scale length: 10 μm
6	GX51-SLMG100	Scale glass for 100×, scale length: 10 μm
7	GX51-SLMGS	Grain size scale, applied to JIS G 0551, ISO 643 and ASTM E112 AUSTENITE GRAINS IN STEEL PLATE IV No.1 to 8
8	GX51-SLMGH	Lattice pattern, applied to JIS G 0555
9	GX-SLMG	Parfocal glass to adjust the light path length





# Build Your System Your Way

## Microscope Frame

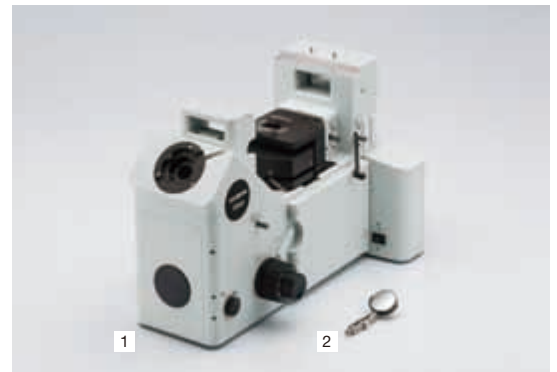
The GX53 microscope has a built-in power supply for reflected light. The camera adaptor port at the front of the microscope enables users to display live and captured images without using a trinocular tube. Choose various accessories such as a stage mirror that enables users to check the observation position and the magnification of the objectives.

### Microscope frames

	■ Possible	Reflected light	Transmitted light
1	GX53F	■	■

### Accessories

2	CK40M-MS	Observation position check mirror
-	COVER-021	Dust cover for GX53 system



## Transmitted Illumination Unit

Condensers collect and focus transmitted light and are used for transmitted light observation.

1	IX2-ILL100	Stand for transmitted illumination, attachable BF/POL lamp housing for LED (BX3M-LEDT) and halogen (U-LH100L-3)
2	PMG3-LWCD	Condenser for transmitted light observation, condenser (NA 0.6, WD 12 mm) with aperture stop



## Light Sources

Choose the light source and power supply you need to illuminate your sample. Choose the appropriate light source for your observation method.

### Standard LED light source configuration

1	BX3M-LEDR	LED lamp housing for reflected light
2	BX3M-LEDT	LED lamp housing for transmitted light
3	BX3M-PSLED	Power supply for LED lamp housing (required for transmitted light only)

### High intensity light source configuration

4	MX-HGAD	High intensity light adapter
5	U-LLGAD	Liquid light guide adapter
6, 7	U-LLG150 (300)	Liquid light guide, length: 1.5 m (3 m)
8	U-HGLGPS	High intensity light source (mercury), including one SHI-1300L in the standard package
-	SHI-1300L	130 W mercury lamp
9, 10	U-LH100HG (HGAP0)	Mercury lamp housing, chromatic aberration correction type
-	USH-1030L	100 W mercury lamp
11	U-CLA	Flexible extension handle for mercury lamp housing
12	U-RFL-T	Power supply for 100 W mercury lamp
13	U-CST	Optical axis adjustment sample for mercury lamp housing

### Halogen light source configuration

14	U-LH100L-3	Halogen lamp housing
-	12V100W HAL (-L)	100 W halogen lamp (long life type)
15	U-RMT	Extender cable for halogen lamp housing, cable length 1.7 m (requires cable extension when necessary)
16, 17	TH4-100 (200)	100 V (200 V) specification power supply for 100 W/50 W halogen lamp
18	TH4-HS	Hand switch to change the light intensity of halogen (dimmer TH4-100 (200) without hand switch)

### Double lamp housing configuration

19	U-DULHA	Dual lamp housing attachment
		High intensity light source configuration (MX-HGAD is not required when using U-LH100HG (HGAP0))
		BX3M-LEDR (with standard LED light source configuration)
		Halogen light source configuration



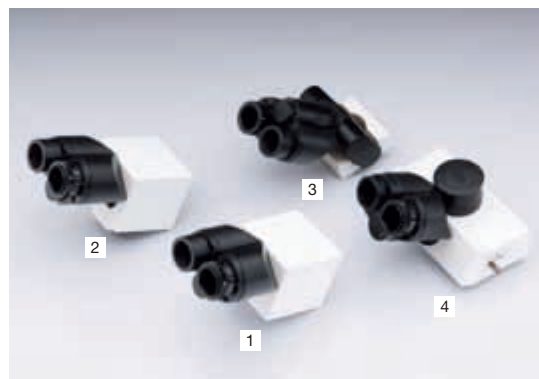
## Tubes

Select tubes for imaging through the eyepieces or for use with a camera. Choose the tube you need by imaging type and level of ergonomic comfort.

		FN (mm)	Type	Angle type	Image	Diopter adjustment mechanism	Turret mechanism
1	U-BI90	22	Binocular	Fixing	Reverse	Right only	–
2	U-BI90CT	22	Binocular	Fixing	Reverse	Right only	4 positon*
3	U-TBI90	22	Binocular	Tilting	Reverse	Right only	–
4	U-TR30H-2	22	Trinocular	Fixing	Reverse	Right only	–

\*4 positions are O, CT, O, and S.

(O: Empty, CT: Centering telescope for adjustment of aperture stop, S: Shutter preventing light from eyepiece.)



## Eyepieces

Eyepiece for viewing directly into the microscope. Select based on the desired field of view.

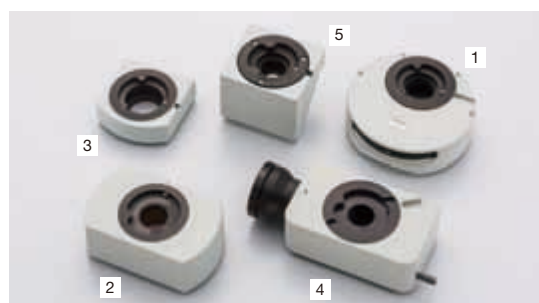
	■: Possible	FN (mm)	Diopter adjustment mechanism	Built-in cross reticle
1	WHN10X	22		
2	WHN10X-H	22	■	
3	CROSS WHN10X	22	■	■



## Intermediate Tubes

Various accessories for multiple purposes. For use between the tube and microscope frame.

1	U-CA	Magnification changer (1×, 1.25×, 1.6×, 2×)
2	U-ECA	Magnification changer (1×, 2×)
3	U-EPA2	Eyepoint adjuster : + 30 mm
4	GX-SPU	Attachable camera adapter with side port
5	IX-ATU	Attachable tube : U-TR30H-2



## Camera Adapters

Adaptors are used to add a camera. Select the adaptor based on the field of view and magnification. The actual observation range can be calculated using the following formula: actual field of view (diagonal mm) – viewing field (viewing number) / objective magnification.

		Magnification	Centering adjustment (mm)	Camera image area (field number) (mm)			Attachable unit
				2/3 in.	1/1.8 in.	1/2 in.	
1	GX-TV0.7XC	0.7	–	15.3	12.6	11.4	GX53F
2	GX-TV0.5XC	0.5	–	21.4	17.6	16	GX53F
3	U-TV1X-2 with U-CMAD3	1	–	10.7	8.8	8	GX-SPU
4	U-TV1XC	1	ø2	10.7	8.8	8	GX-SPU
5	U-TV0.63XC	0.63	–	17	14	12.7	GX-SPU
6	U-TV0.5XC-3	0.5	–	21.4	17.6	16	GX-SPU
7	U-TV0.35XC-2	0.35	–	–	–	22	GX-SPU
8	U-TV0.25XC*	0.25	–	–	–	–	GX-SPU
9, 10, 11	IX-TVAD with U-FMT/U-CMT	1	–	10.7	8.8	8	U-TR30H-2

For information on digital cameras, please visit our website at <http://www.olympus-ims.com/en/microscope/dc/>

\* A camera can be attached when the image area (field number) is less than 1/3 inch.



## Nosepieces

Nosepieces are used to attach objectives and sliders. Choose your nosepiece based on the number of objectives you want to attach, objective type, and whether or not you are using a slider attachment.

	■: Possible	Type	Holes	BF	DF	DIC	MIX	ESD	Number of centering holes
1		Manual	5	■					
2		Coded	5	■				■	
3		Manual	4	■		■			4
4		Manual	6	■		■			
5		Manual	6	■		■		■	
6		Manual	6	■		■			2
7		Manual	7	■		■			
8		Coded	6	■		■			
9		Coded	7	■		■			
10		Manual	5	■	■				
11		Manual	5	■	■	■	■		
12		Manual	5	■	■	■	■		2
13		Manual	6	■	■	■	■		
14		Coded	5	■	■	■	■	■	
15		Coded	6	■	■	■	■	■	



## Sliders

Select the slider to complement traditional brightfield observation. The DIC slider provides topographic information about the sample with options to maximize contrast or resolution. The MIX slider provides illumination flexibility with a segmented LED source in the darkfield path.

	Type	Amount of shear	Recommended objectives
1	Standard	Medium	MPLFLN, MPLAPON, LMPLFLN, and LCPLFLN-LCD
2	Resolution	Small	MPLFLN, MPLAPON
3	Contrast	Large	LMPLFLN and LCPLFLN-LCD

MIX slider for MIX observation

	Type	Available objectives
4	MIX slider	MPLFLN-BD, LMPLFLN-BD, MPLN-BD



## Control Box Hand Switches

Control boxes for connecting the microscope's hardware with a PC and hand switches for hardware display and control.

### Control box

1	BX3M-CBFM	Control box for the BXFM system
2	GX-IFRES	Box for OB indicator of the hand switch BX3M-HS; If the GX-IFRES connects to BX3M-CBFM, U-CBS is not needed when using OLYMPUS Stream/DP2-SAL
3	U-CBS	Control box for coded functions

### Hand switch

4	BX3M-HS	MIX observation control, indicator of coded/motorized hardware, programmable software function button of OLYMPUS Stream
5	U-HSEXP	Operate a camera's shutter

### Cable

-	U-MIXRCBL	U-MIXR cable, cable length: 0.5 m
---	-----------	-----------------------------------



## Stages

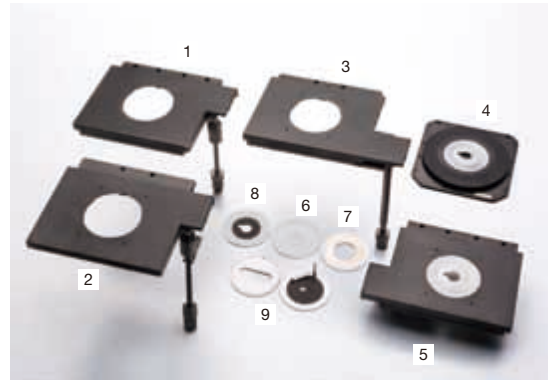
Stages and stage plates for sample placement. Select based on sample shape and size.

### Stages

1	IX2-SFR	Flexible right handle stage, the handle grip is about 260 mm below the stage surface
2	GX-SFR	Flexible right handle stage, the handle grip is about 280 mm below the stage surface
3	GX-SVR	Right handle stage
4	IX2-GS	Gliding stage, the stage plate is incorporated (diameter: $\phi 110$ mm, shape of hole: $\phi 25$ mm teardrop, material: aluminum alloy)
5	IX-SVL-2	Flexible left handle (short) stage, stage plate is incorporated (diameter: 110 mm, shape of hole: $\phi 25$ mm teardrop, material: aluminum alloy)

### Stage plates

		Plate area	Hole type	Material
6	CK40-CPG30	$\phi 110$ mm	Diameter $\phi 30$ mm	Glass
7	IX-CP50	$\phi 110$ mm	Diameter $\phi 50$ mm	Brass
8	IX2-GCP	$\phi 110$ mm	Teardrop $\phi 25$ mm	Brass
9	GX-CP	$\phi 110$ mm	Teardrop $\phi 12$ mm	Brass
			Long hole (74 × 25 mm)	Amber alloy



## Optical Filters

Optical filters convert sample exposure light to various types of illumination. Select the appropriate filter for your observation requirements.

### BF, DF, FL

1, 2, 3	U-25ND50, 25, 6	Transmittance 50%/25%/6%
4	U-25LBD	Daylight color filter
5	U-25LBA	Halogen color filter
6	U-25IF550	Green filter
7	U-25L42	UV cut filter
8	U-25Y48	Yellow filter
9	U-25FR	Frost filter
10	GX-FSL	Used by combining GX51 filters, attachable filter quantity: 3
11, 12	└25ND25, 6	$\phi 25$ mm transmittance 25%/6%
13	└25LBD	$\phi 25$ mm daylight color filter
14	└25IF550	$\phi 25$ mm green filter
15	└25Y48	$\phi 25$ mm yellow filter



### POL, DIC

16	GX-AN	Analyzer for reflected light; polarization direction is fixed
17	GX-AN360	Analyzer for reflected light; polarization direction is 360 degree rotatable
18	GX-PO3	Polarizer for reflected light; polarization direction is fixed
19	GX-POTP	Tint plate polarizer for reflected light; polarization direction is fixed

### Transmitted light

20	U-POT	$\phi 45$ mm polarizer filter
21	43IF550-W45	$\phi 45$ mm green filter for transmitted light
22	45-LBD-IF	$\phi 45$ mm daylight color filter for transmitted light
23, 24	45-ND25, 6	$\phi 45$ mm transmittance 25%/6% for transmitted light

### Other

25	U-25	Empty filter, used by combining user's $\phi 25$ mm filters
----	------	---



## UIS2 Objectives

Objectives magnify the sample. Select the objective that matches the working distance, resolving power, and observation method for the application.

Objectives	Magnifications	NA	W.D. (mm)	Cover glass thickness*2 (mm)	Resolution*3 (μm)				
MPLAPON	1 2	50X 100X	0.95 0.95	0.35 0.35	0 0	0.35 0.35			
	3 4 5 6 7 8 9 10	1.25X*4*5 2.5X*5 5X 10X 20X 40X*1 50X 100X	0.04 0.08 0.15 0.30 0.45 0.75 0.80 0.90	3.5 10.7 20 11 3.1 0.63 1 1	0-0.17 0-0.17 0-0.17 0 0 0 0 0	8.39 4.19 2.24 1.12 0.75 0.45 0.42 0.37			
SLMPLN	11 12 13	20X 50X 100X	0.25 0.35 0.60	25 18 7.6	0-0.17 0 0	1.34 0.96 0.56			
	LMPLFLN	14 15 16 17 18	5X 10X 20X 50X 100X	0.13 0.25 0.40 0.50 0.80	22.5 21 12 10.6 3.4	0-0.17 0-0.17 0 0 0	2.58 1.34 0.84 0.67 0.42		
		MPLN*4	19 20 21 22 23	5X 10X 20X 50X 100X	0.10 0.25 0.40 0.75 0.90	20 10.6 1.3 0.38 0.21	0-0.17 0-0.17 0 0 0	3.36 1.34 0.84 0.45 0.37	
LCPLFLN-LCD			24 25 26	20X 50X 100X	0.45 0.70 0.85	8.3-7.4 3.0-2.2 1.2-0.9	0-1.2 0-1.2 0-0.7	0.75 0.48 0.39	
			MPLFLN-BD*6	27 28 29 30 31 32	5X 10X 20X 50X 100X	0.15 0.30 0.45 0.80 0.90	12 6.5 3 1 1	0-0.17 0-0.17 0 0 0	2.24 1.12 0.75 0.42 0.37
	MPLFLN-BDP*6			33 34 35 36 37	5X 10X 20X 50X 100X	0.15 0.25 0.40 0.75 0.90	12 6.5 3 1 1	0-0.17 0-0.17 0 0 0	2.24 1.34 0.84 0.45 0.37
LMPLFLN-BD*6		38 39 40 41 42		5X 10X 20X 50X 100X	0.13 0.25 0.40 0.50 0.80	15 10 12 10.6 3.3	0-0.17 0-0.17 0 0 0	2.58 1.34 0.84 0.67 0.42	
		MPLN-BD*4*6*7		43 44 45 46 47	5X 10X 20X 50X 100X	0.10 0.25 0.40 0.75 0.90	12 6.5 1.3 0.38 0.21	0-0.17 0-0.17 0 0 0	3.36 1.34 0.84 0.45 0.37



\*1 The MPLFLN40X objective is not compatible with the differential interference contrast microscopy.

\*2 0: For viewing specimens without a cover glass.

\*3 Resolutions calculated with aperture iris diaphragm wide open.

\*4 Limited up to FN 22, no compliance with FN 26.5.

\*5 Analyzer and polarizer are recommended for usage with MPLFLN1.25X and 2.5X.

\*6 BD: Brightfield/darkfield objectives.

\*7 Slight vignetting may occur in the periphery of the field when MPLN-BD series objectives are used with high-intensity light sources, such as mercury and xenon, for darkfield observation.

### ■ Definition for Objective Lens Abbreviations

**M P L (Plan) F L N 1 0 0 B D**

**M:** Metallurgical (no cover)  
**LM:** Long working distance metallurgical use  
**SLM:** Super long working distance metallurgical use  
**LC:** Observation through substrate

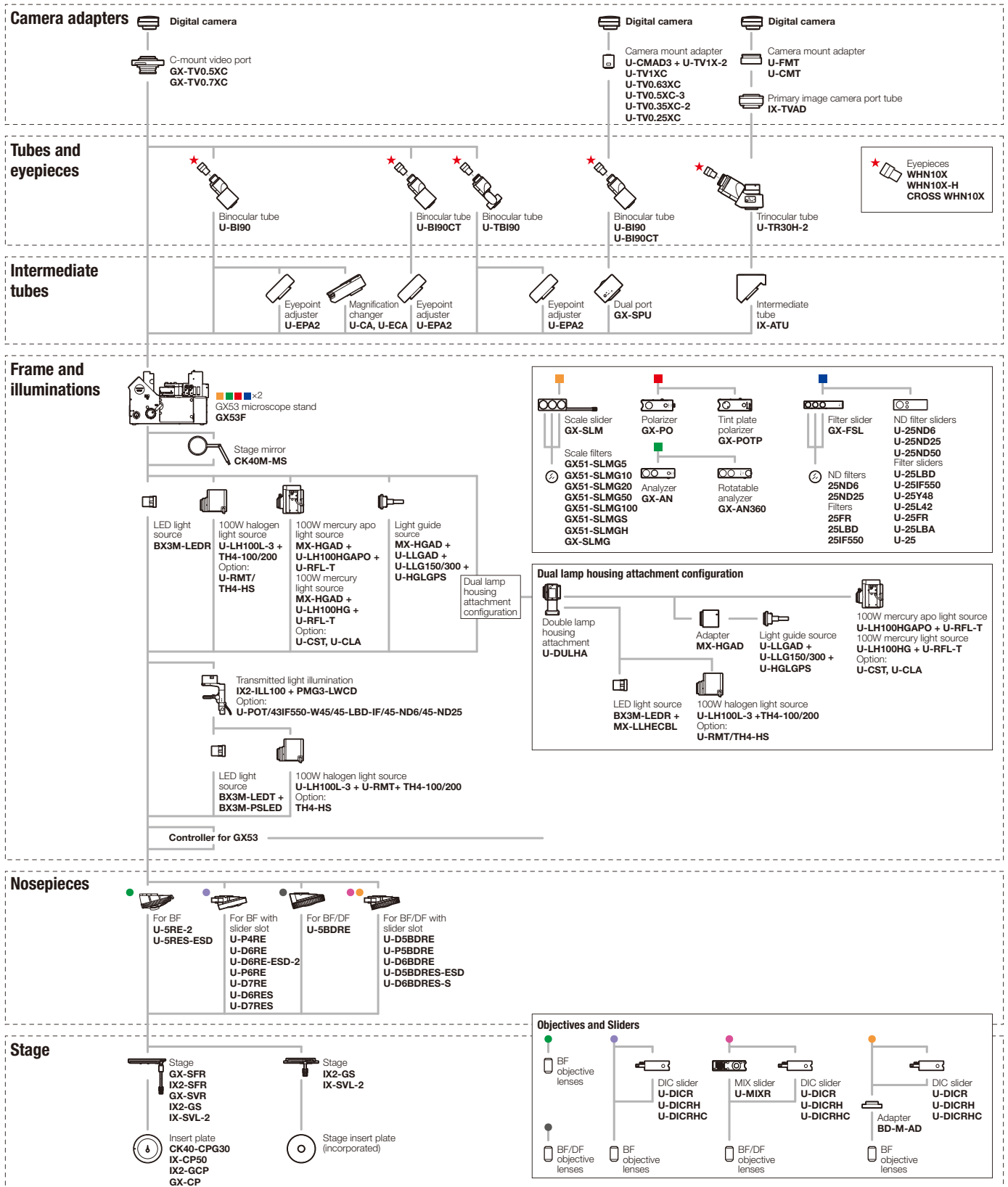
**PL:** Plan/  
 Corrects field curvature of the periphery of the image plane

**None:** Achromat/  
 Corrects aberration at two wavelengths of blue and red  
**FL:** SemiApochromat/  
 Corrects chromatic aberration in the visible range (violet to red)  
**APO:** Apochromat/  
 Optimally corrects chromatic aberration in the entire visible band (violet to red)

**Number:**  
 Objective lens magnification

**None:** Brightfield  
**BD:** Brightfield/Darkfield  
**BDP:** Brightfield/Darkfield/  
 Polarizing  
**LCD:** LCD

# GX53 System Diagram

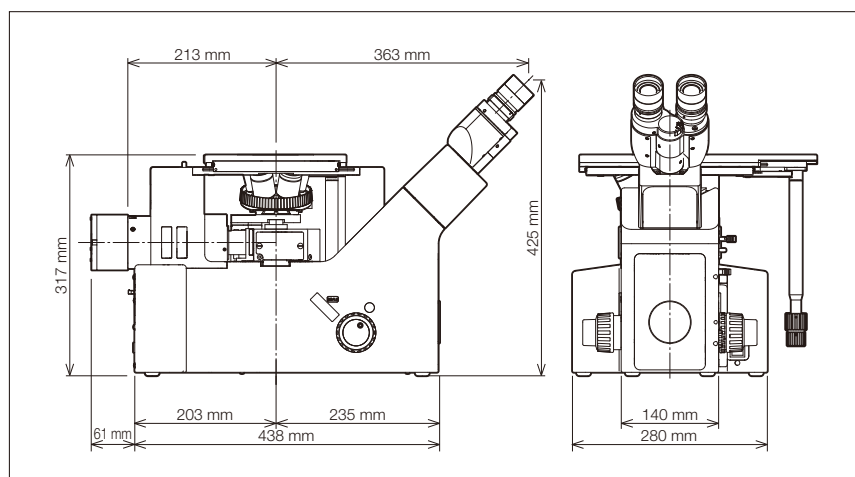


# Specifications

		<b>GX53</b>
Optical system		UIS2 optical system (infinity-corrected)
Microscope frame	Reflected light illumination	Manual brightfield/darkfield selection by mirror unit Manual field stop/aperture stop switch with centering Light source: White LED (with Light Intensity Manager) /12 V, 100 W halogen lamp/100 W mercury lamp/light guide source Observation mode: brightfield, darkfield, differential interface contrast (DIC)*1, simple polarizing*1, MIX observation (4 directional darkfield)*2 *1 Slider for exclusive use of this observation is required. *2 MIX observation configuration is required.
	Transmitted light illumination (optional)	Stand for transmitted light (IX2-ILL100: with field stop) is required PMG3-LWCD: Condenser (NA 0.6, WD 12 mm) with aperture stop Light source: White LED (with Light Intensity Manager) 12 V, 100 W halogen lamp Observation modes: brightfield, simple polarizing
	Imprinting of scale	All ports reversed positions (up/down) from observation positions seen through the eyepiece
	Output front port (optional)	Camera and DP system (reversed image, special camera adapter for GX)
	Output side port (optional)	Camera, DP system (upright image)
	Electrical system	Reflected light illumination Built-in LED power supply for reflected light illumination Continuously-variable light intensity dial Input rating 5 V DC, 2.5 A (AC adapter 100–240 V, AC 0.4 A, 50 Hz/60 Hz) Transmitted light illumination (requires the optional BX3M-PSLED power supply) Continuously-variable light intensity dial by voltage Input rating 5 V DC, 2.5 A (AC adapter 100–240 V, AC 0.4 A, 50 Hz/60 Hz) External interface (requires the optional BX3M-CBFM control box) Coded nosepiece connector × 1 MIX Slider (U-MIXR) connector × 1 Handset (BX3M-HS) connector × 1 Handset (U-HSEXP) connector × 1 RS-232C connector × 1, USB 2.0 connector × 1
Focus	Rack and pinion with roller guide Manual, coarse and fine coaxial handle; focus stroke 9 mm (2 mm above and 7 mm below the stage surface) Fine handle stroke per rotation: 100 μm (min. scale: 1 μm) Coarse handle stroke per rotation: 7 mm With torque adjustment ring for coarse focusing With upper limit stopper for coarse focusing	
Tubes	Widefield (FN 22)	Inverted: binocular (U-BI90, U-BI90CT), trinocular (U-TR30H-2), tilting binocular (U-TBI90)
Nosepiece		Brightfield Holes: 4 to 7 pcs, Type: Manual/Coded, Centering: Enabled/Disabled Brightfield/darkfield Hole: 5 to 6 pcs, Type: Manual/Coded, Centering: Enabled/Disabled
Stage		Right handle stage for GX (X/Y stroke: 50 × 50 mm, max. load 5 kg) Flexible right handle stage, left short handle stage (each X/Y stroke: 50 × 50 mm, max. load 1 kg) Gliding stage (max. load 1 kg) A set of teardrop and long hole types
Weight		Approx. 25 kg (microscope frame 20 kg)
Environment		<ul style="list-style-type: none"> <li>Indoor use</li> <li>Ambient temperature: 5 to 40 °C (45 to 100 °F)</li> <li>Maximum relative humidity: 80% for temperatures up to 31 °C (88 °F) (without condensation)</li> <li>In case of over 31 °C (88 °F), the relative humidity is decreased linearly through 70% at 34 °C (93 °F), 60% at 37 °C (99 °F), and to 50% at 40 °C (104 °F).</li> <li>Pollution degree: 2 (in accordance with IEC60664-1)</li> <li>Installation/Overvoltage category: II (in accordance with IEC60664-1)</li> <li>Supply voltage fluctuation: ±10 %</li> </ul>

# Dimensions

GX53



**209-264 11/2017**  
**LECO CORPORATION**  
**www.leco.com**  
**800-292-6141**